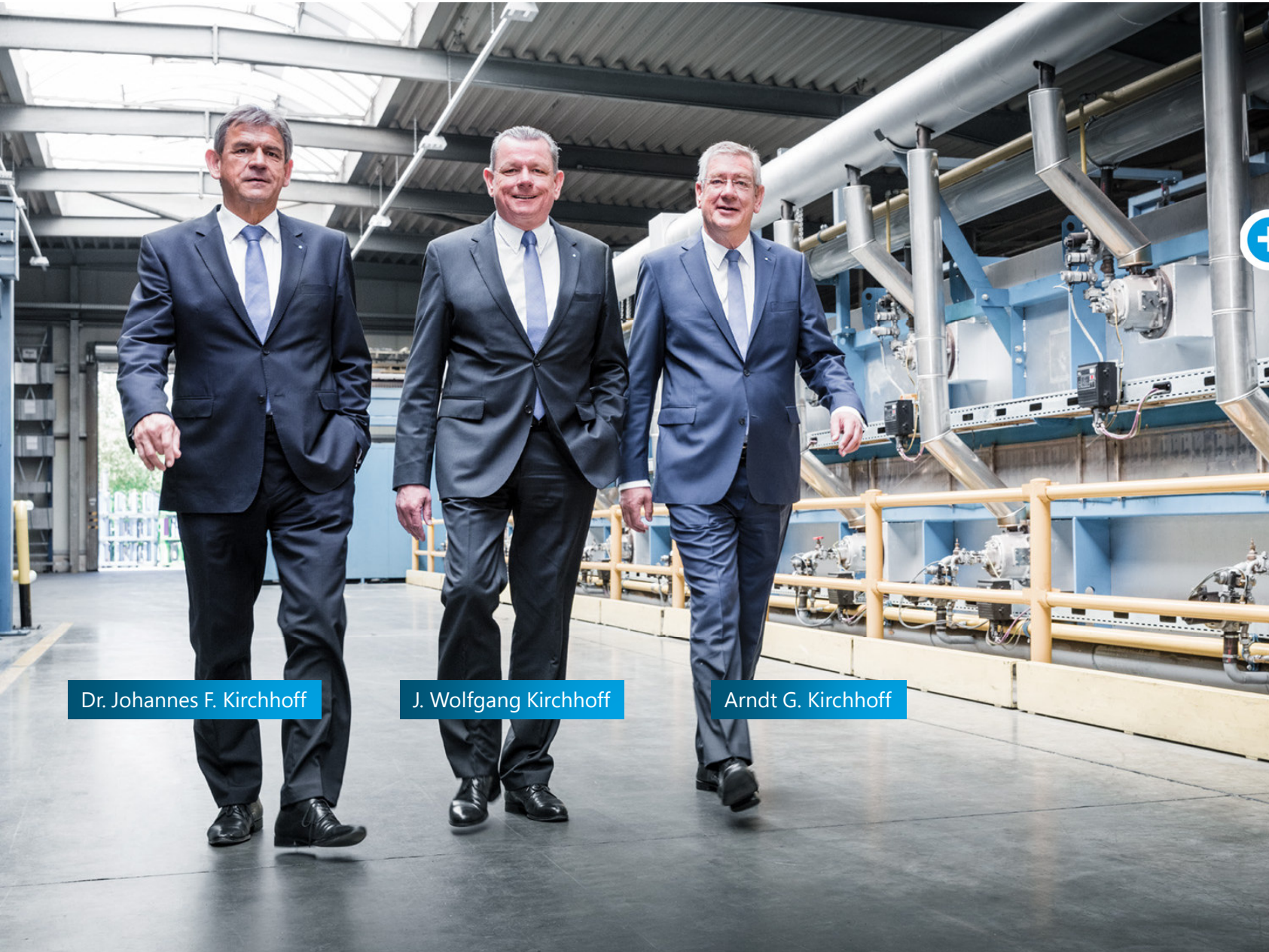




# TTS Webinar Feb 9th

Lisa Kitterer, Vimala Pehnelt, Mary Sinischo





Dr. Johannes F. Kirchhoff

J. Wolfgang Kirchhoff

Arndt G. Kirchhoff

+ Family-Business



## + Locations Worldwide



27  
Plants



5  
Sales Offices



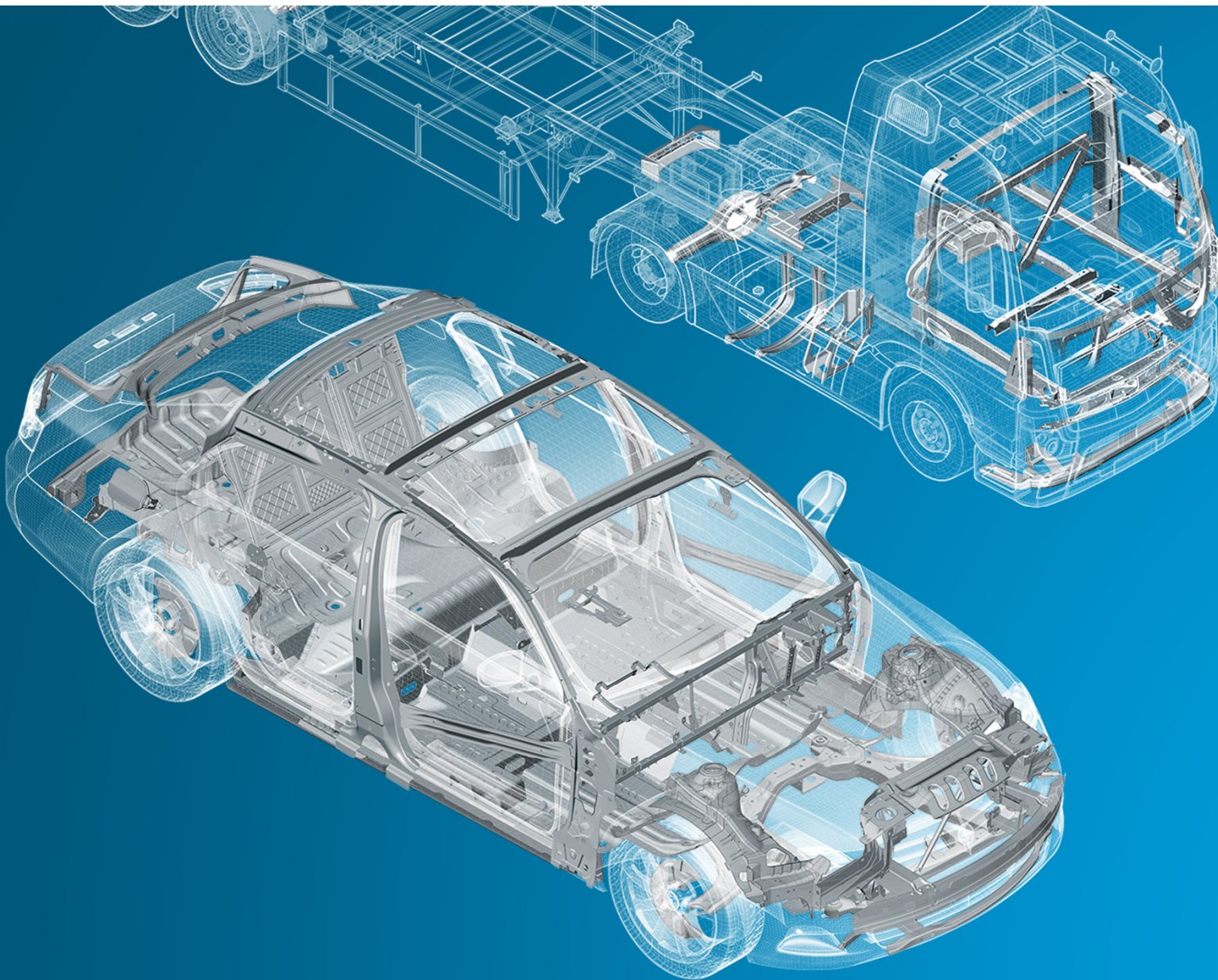
7650  
Employees



# + Our Customers (OEMs)

— "KIRCHHOFF Automotive is based on the performance principle and stands for the highest customer service."

— Our Vision —



## + Our Products

— "KIRCHHOFF Automotive is a global leader in the development and supply of best-in-class structures for the body and chassis of vehicles."

— Our Vision —

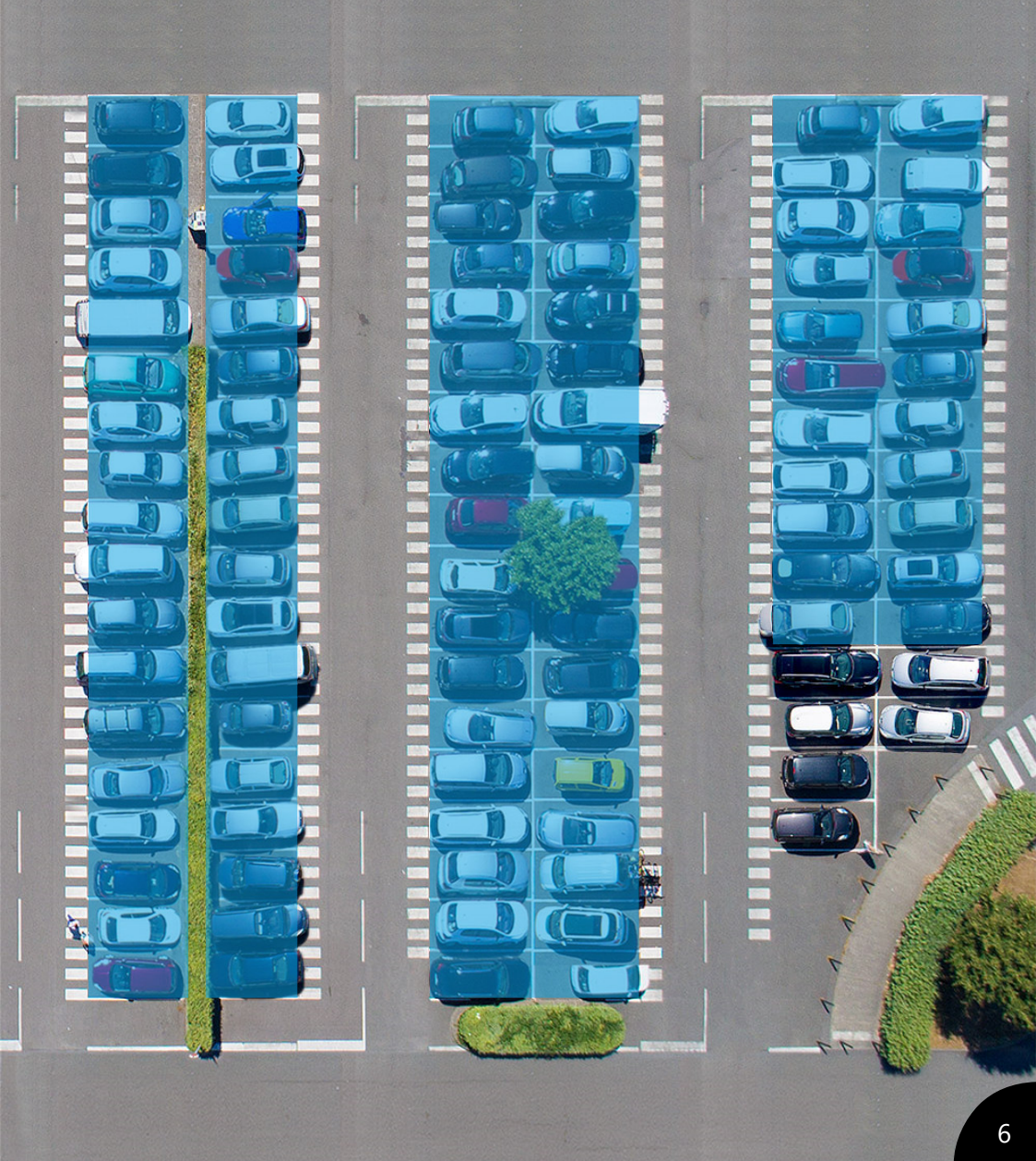
— In 2020 3.69 million passenger cars and light commercial vehicles were produced

in Germany



94.5 %

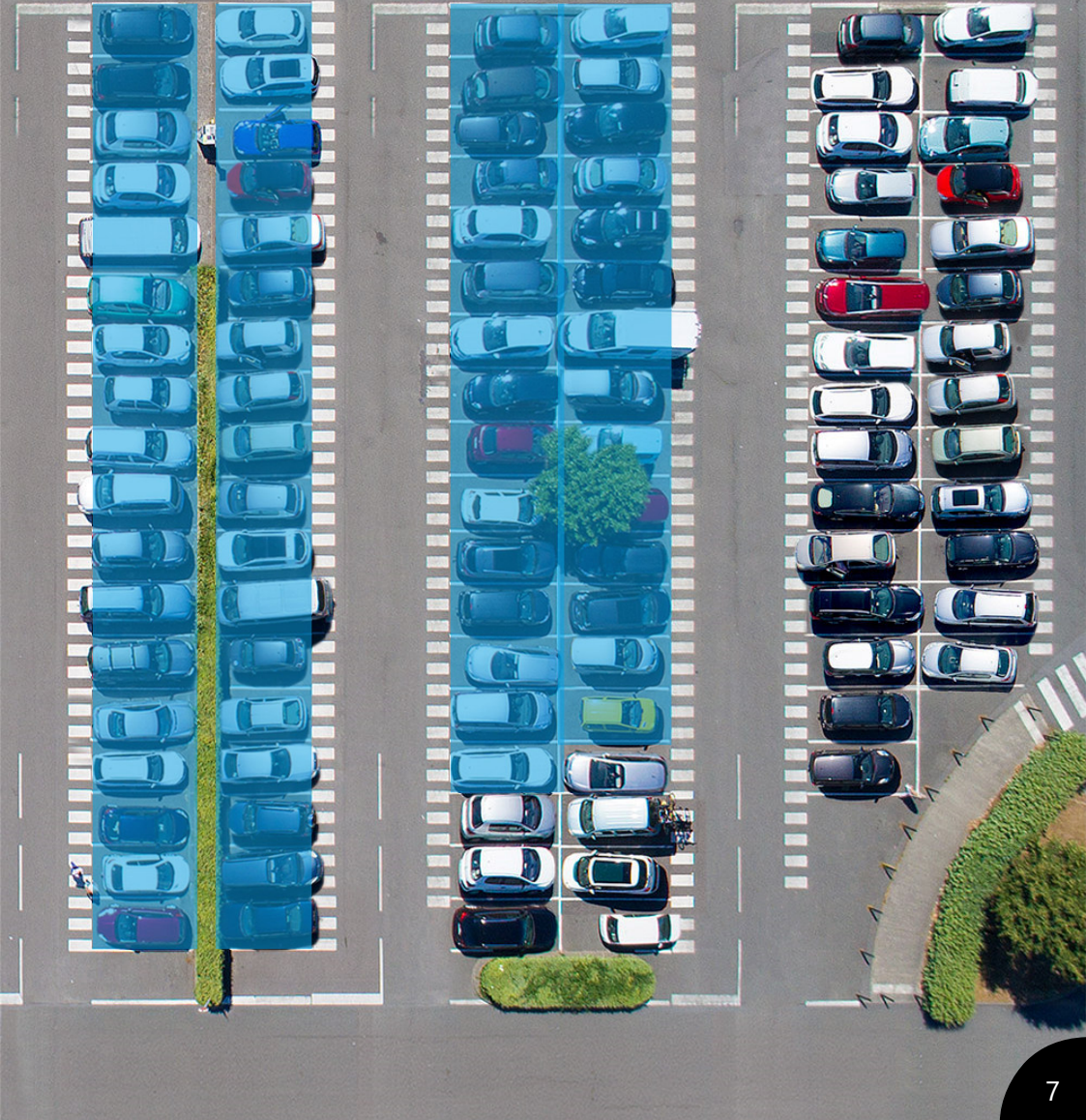
of them, contain at least one part from our Company

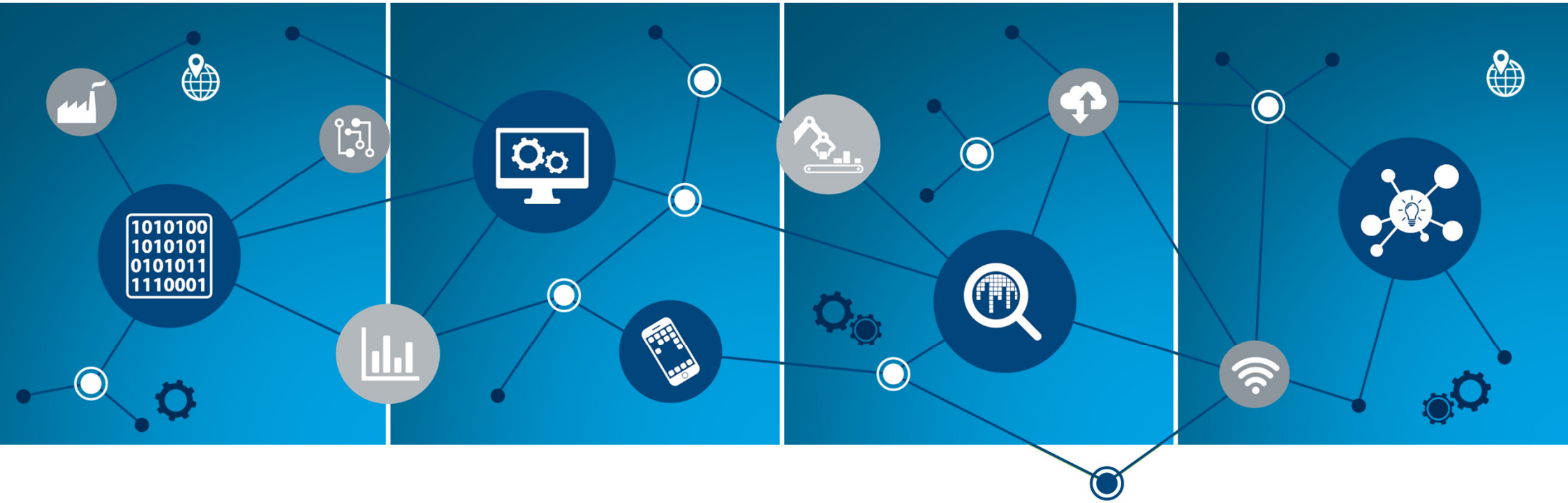


— In 2020, 13 million passenger cars and light commercial vehicles were produced in North America

63,6 %

of them, contain at least one part from our Company





**1** Data Transparency & Availability

**2** Analysis, Support & Automation

**3** Predictive Systems & Virtual Reality

**4** Intelligent networks

## Digital transformation in four steps

Sustainable and value-creating: This is how our employees, our customers and our company benefit equally.



The overall employee development strategy is **"to have world class development programs to ensure that the personal development objectives of our employees are met."**



**Lisa Kitterer**

**Global ED**



**Vimala Pehnelt**

**ED Europe & Asia**



**Mary Sinischo**

**ED North America**

**+** Our Team  
and our  
mission

- Start creating E-Learnings through KA Academy Project
- K>People: E-Learnings that need to be tracked
- TTS Orange: Moment of need
- Flexible Learning and transfer of know-how globally



**START**

**Since 2020**



**After 2022**

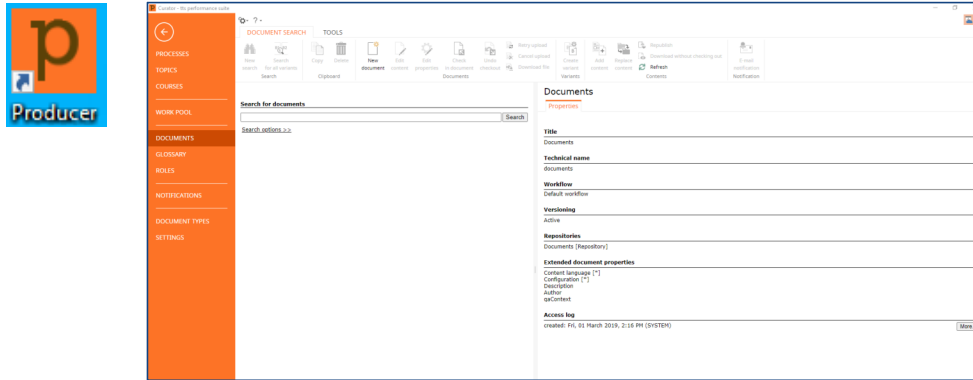
- Digital and Hybrid Learning journeys
- Switch Learning Platform to a more advanced system
- Digital Learning on the shopfloor

- Mostly classroom trainings
- Only some locations utilizing training catalogue in LMS for all employees

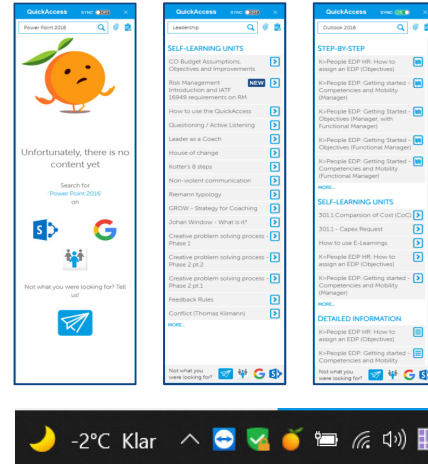
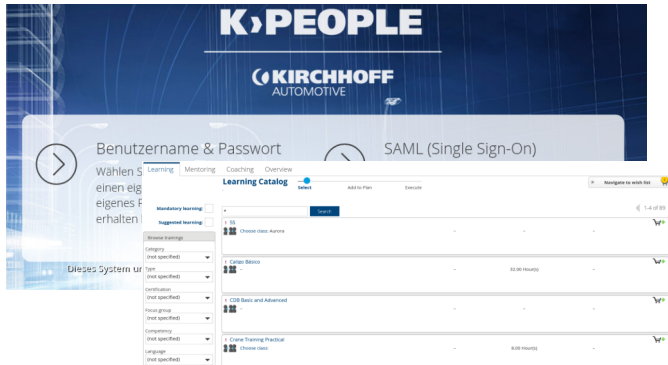
**Until 2019**



# 1. Creating content in different output formats

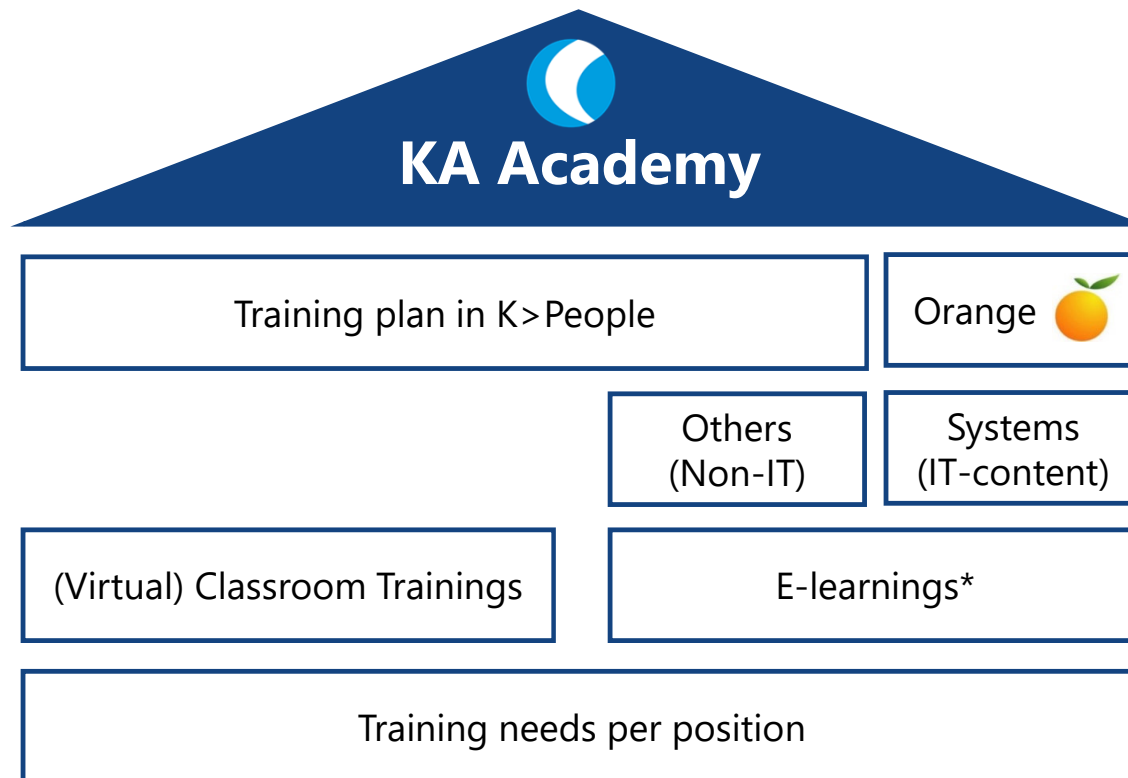


# 2. Sharing content

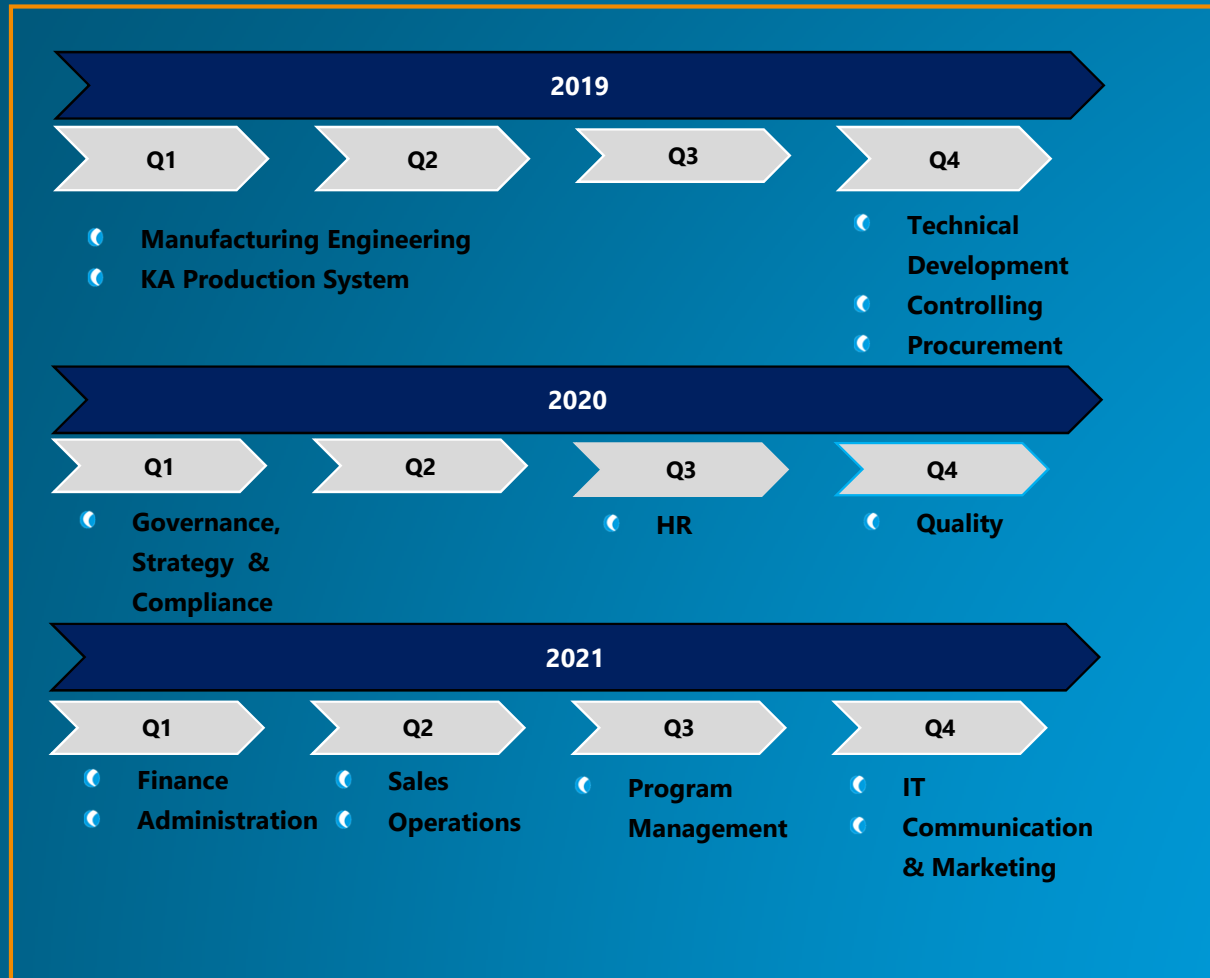


+ Our system landscape

# KA Academy: Overview



\* Make or buy decision should be part of the evaluation process here as well, especially if content is NOT KA specific



# + KA Academy: Project Plan

— Functional areas determine their **training needs** per position

— **Status Feb 2022:** All functional areas started their KA Academy activities

### Project lead

- TT Performance Suite Admins
- Main contact for functional leads
- Main contact for TTS
- Responsible for overall project management and development of processes
- Train functional leads

- KAEA: Vimala
- KANA: Mary
- Global: Lisa

### Functional lead

- Author
- Responsible for training and supporting other authors within functional area incl. quality check of material
- Go to person for Employee Development team

- 1 per Functional Area

### Authors

- Create E-learning
- Re-record E-learning in local language
- Upload E-learning
- Experts within functional area for defined topic

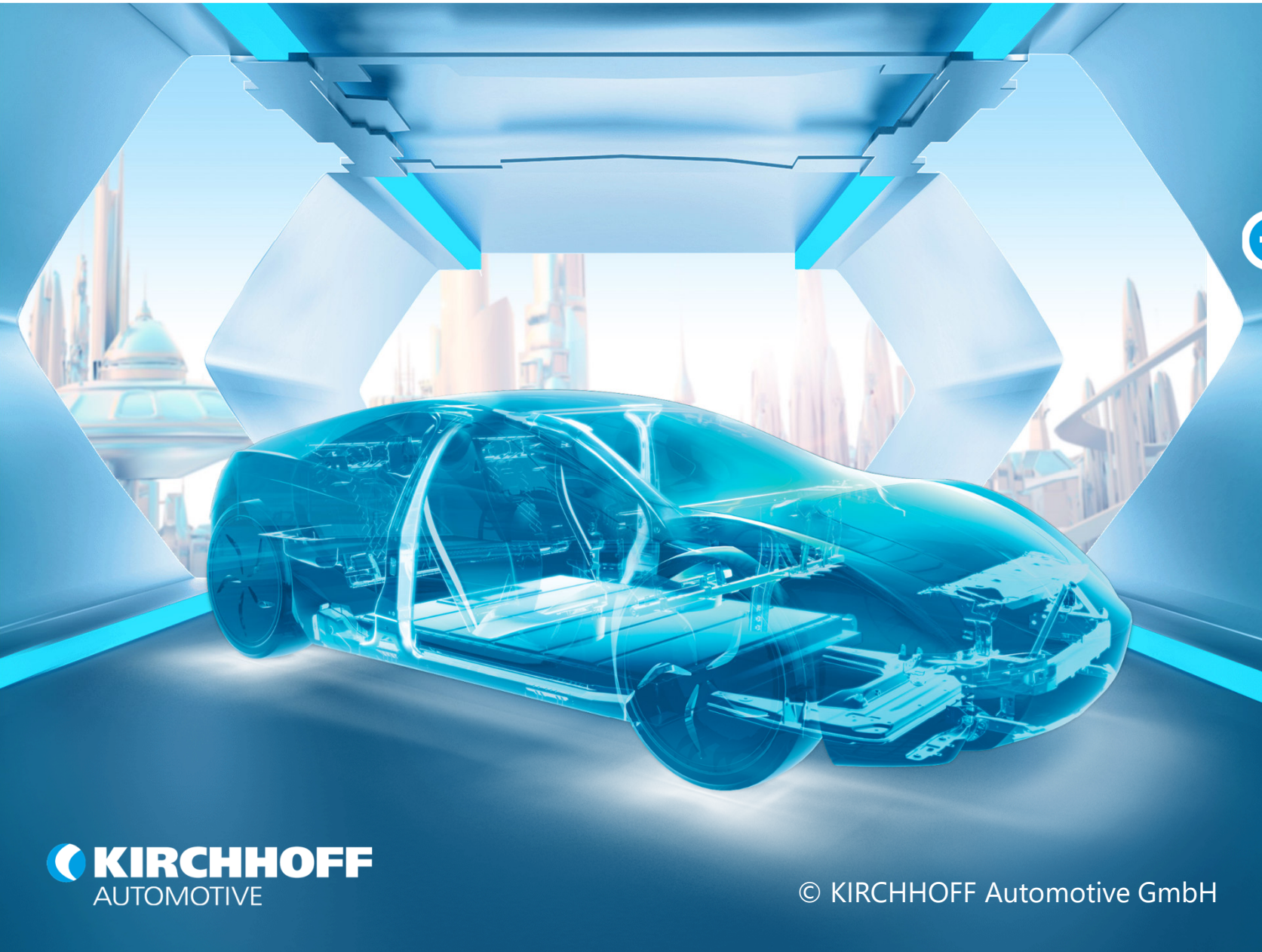
- XX per functional area

## + E-Learning: Understanding responsibilities

# Next steps

- Continue KA Academy projects per functional area
- Global survey on user experience with Orange
- Determine needs for digital learning on the shopfloor





## + Questions?

Your contact:

KIRCHHOFF Automotive  
Deutschland GmbH  
Am Eckenbach 10-14  
57439 Attendorn

info@  
kirchhoff-automotive.com  
+49 2722 696-0